

## Topology software PROscan® Active V2

### Funktion

The **PROscan® Active V2** software enables the user at any time to record and display an actual topology plan of a PROFINET/ Ethernet network incl. all important device information. Subsequently this information can be edited and printed in a clear summary. It is also possible to simply save the information as Topo/PDF/CSV data. By using a compare scan all topology changes will be illustrated in traffic light colours. The software also offers an optimised touch panel designed to be used on HMI & Panel PC's.

Due to multiple licenses the user is able to install the software at various machines and can therefore demonstrate multiple network structures. This ensures that the current topology and the current network data can be recorded and displayed at each machine.

PROscan® Active V2 provides the user with following information, which is of high importance for the network maintenance and troubleshooting's:

- Detection of the real network structure (topology)
- Device information
  - PROFINET name
  - IP/MAC address
  - Hardware/Software version
  - Device type/name
  - Order number
- Line information
  - Line length
  - Power budget (POF)
- Port Overview
  - Discards
  - Errors

### New features

- New diagnostic mode with transparent statistics
- Comparison of hardware/software versions, with a warning if a deviation is found
- Transparent acceptance report as check list ("Fulfilled"/"Not fulfilled"), with own company logo
- Multi-topology: Several topologies can be opened at the same time
- Significantly faster network scan with minimum network load
- Simplified editing::
  - Software helps to correctly arrange devices
  - Port numbers for the created connections are editable
  - All changes can be undone

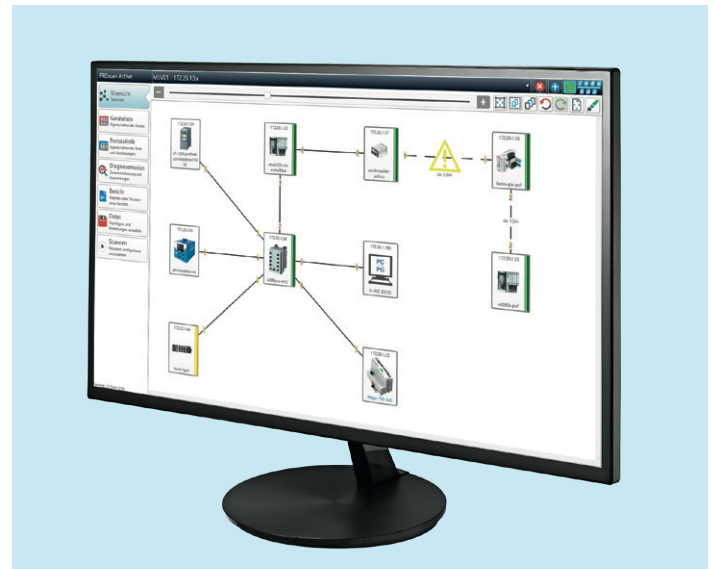
### Interacting with PROFINET-INspektor® NT

#### PROFINET DiagnoseDUO:

In case that a PROFINET INspektor® NT is located within the network, all determined quality parameters will automatically be assigned to the devices and the corresponding status will be graphically displayed in traffic light colours.

### System requirements

- Operating system:
  - Microsoft® Windows® Vista, 7, 8, 10
  - Microsoft® Windows® Server 2008, 2012, 2016
- Hardware requirements
  - Intel Atom 800MHz or more
  - 1GB RAM or more
  - Min. 400MB hard disk space



Topology software PROscan® Active V2

Network Category	Active	Device Type (IP Address)	Subnet	Gateway	MAC Address	Device Name	HW-Version	SW-Version	Notes	Device Type Name	Order Number	Vendor ID	Device ID	Controller	Health/Status
Settings	OK	192.168.1.1	192.168.1.0/24	192.168.1.1	08:00:2B:01:00:02	Switch	3	V3.24.0		Switch	116521	08	00000001	Switch	OK
Layer 1 Configuration	OK	192.168.1.2	192.168.1.0/24	192.168.1.2	08:00:2B:01:00:03	Switch	3	V3.24.0		Switch	116522	08	00000002	Switch	OK
Tools	OK	192.168.1.3	192.168.1.0/24	192.168.1.3	08:00:2B:01:00:04	Switch	3	V3.24.0		Switch	116523	08	00000003	Switch	OK
Device List	OK	192.168.1.4	192.168.1.0/24	192.168.1.4	08:00:2B:01:00:05	Switch	3	V3.24.0		Switch	116524	08	00000004	Switch	OK
Port Statistics	OK	192.168.1.5	192.168.1.0/24	192.168.1.5	08:00:2B:01:00:06	Switch	3	V3.24.0		Switch	116525	08	00000005	Switch	OK

Device list

Network Category	Number	Connected	Link Type	Length	Send power budget	Receive power budget	Connector	Set/wards	Out/wards	Active	Out/wards	Set/wards	Out/wards	Check	Should
Settings	1	OK	192.168.1.1	192.168.1.1	1000m	1000m	RJ45	1	1	1	1	1	1	OK	1000m
Layer 1 Configuration	2	OK	192.168.1.2	192.168.1.2	1000m	1000m	RJ45	1	1	1	1	1	OK	1000m	
Tools	3	OK	192.168.1.3	192.168.1.3	1000m	1000m	RJ45	1	1	1	1	1	OK	1000m	
Device List	4	OK	192.168.1.4	192.168.1.4	1000m	1000m	RJ45	1	1	1	1	1	OK	1000m	
Port Statistics	5	OK	192.168.1.5	192.168.1.5	1000m	1000m	RJ45	1	1	1	1	1	OK	1000m	

Port Statistic

Device Statistics	Connection Statistics	IP Statistics	Version Statistic	
Device Type Name	Order Number	SW Version	HW Version	Device Count
Euchner MGB	116521	V3.24.0	4	5
	116523	V3.24.0	4	2
Festo CPX-Terminal	TN 197330	V3.2.21	22	2
HAHN RPT200	629320	V1.0.0	1	1
IMI151-3	6E57 151-3BA23-0AB0	V7.0.5	8	26
MIBCOMMPN	MIBCOMMPN	P3.2.24	1	1

Version Statistic

Ordering details	Art. No.
Upgrade from PROscan® Active V1 to V2	117000052
PROscan® Active V2 – Basic License	117000053
PROscan® Active V2 – 5 Licenses	117000057
PROscan® Active V2 – 25 Licenses	117000061

Further licences on request!