

Quality tester PB-Q^{ONE}

Function

The **PB-Q^{ONE}** is a tool for the complete evaluation of PROFIBUS communication quality. With the provided adapter a non-reactive connection to the PROFIBUS network is allowed. Its ease of use and clear and automated evaluation of measuring results allow to reliably evaluate the state of the physical and logical transmission quality in the network. In addition, the PB-Q^{ONE} offers a powerful topology function.

Results

In this overview, all bus devices are displayed in the form of a device matrix including address and detailed information. The colouring of each device (green, yellow, red) allows to immediately evaluate the state of each device. Additionally, the results of the bus physics and bus communication evaluation are clearly displayed.

Quality values

PROFIBUS is based on voltage difference signal which transfers the logical telegram content to the wires A and B. The level of the voltage difference as well as the shape of these signals are indicators of the physical transmission quality respectively the signal quality. As result a bar chart diagram with a quality value for each device in the network is displayed.

Telegram mode

Further analysis possibilities are available in the telegram mode. Through a number of filter and trigger options the data traffic can be evaluated based on events or defined data content.

Topology Scan

It is the only tool on the market to offer fully automatic, non-reactive topology scan performable during a running production. As result the PB-Q^{ONE} represents the real wiring of all devices and even identifies repeaters, measuring points and the cable lengths between the devices.

Technical data

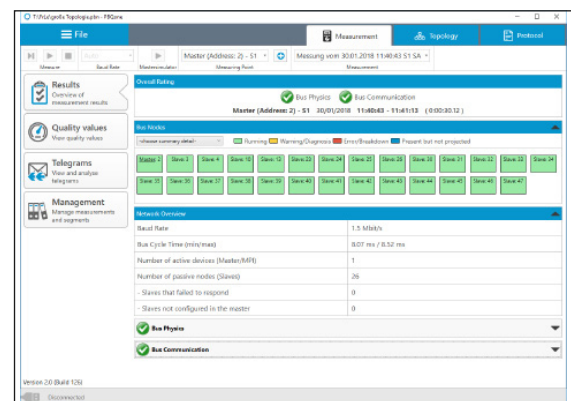
- PROFIBUS port: 9 pole D-SUB connector
- USB: USB 2.0 port
- Transmission rate: 9,6 kBit/s to 12 MBit/s
- Power supply: 500mA via USB
- Dimension (H x W x D): 60 x 117 x 35 mm
- Type of Protection: IP20
- Operating temperature: 0 °C to +50 °C
- Storage temperature: -20 °C to +70 °C
- Conformity: CE

Scope of delivery

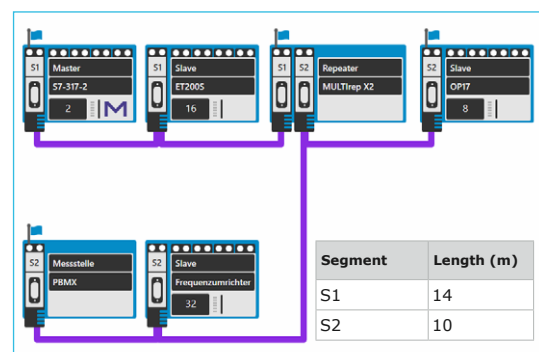
- PROFIBUS Tester PB-Q^{ONE}
- D-Sub 9-pin adapter cable
- USB cable (3 m)
- CD with operating software "Indu-Sol Suite" and device manual
- Transport case



PB-Q^{ONE}



Quality values



Topology

| Ordering details | Art. No. |
|---|-----------|
| PB-Q ^{ONE} | 110010050 |
| Accessories | |
| PROFIBUS PA adapter for PB-Q ^{ONE} | 110020110 |
| M12 Y Measuring adapter | 110020018 |